
DO NOT OPEN THIS BOOKLET UNTIL YOU ARE TOLD TO DO SO

TEST BOOKLET
GENERAL STUDIES
Paper-I

A

Time Allowed : Two Hours

Maximum Marks : 150

INSTRUCTIONS

1. IMMEDIATELY AFTER THE COMMENCEMENT OF THE EXAMINATION YOU SHOULD CHECK THAT THE TEST BOOKLET *DOES NOT* HAVE ANY UNPRINTED OR TORN OR MISSING PAGES OR ITEMS, ETC, IF SO, GET IT REPLACED BY A COMPLETE TEST BOOKLET.
2. **Please note that it is the candidate's responsibility to encode and fill in the Roll Number and Test Booklet Series A, B, C or D carefully and without any omission or discrepancy at the appropriate place in the OMR Answer Sheet. Any omission/discrepancy will render the Answer Sheet liable for rejection.**
3. You have to enter your Roll Number on the Test Booklet in the Box provided alongside . *DO NOT* write *anything else* on the Test Booklet.
4. This Test Booklet contains **150** items (questions). Each item comprises four responses (answers). You will select the response which you want to mark on the Answer Sheet. In case you feel that there is more than one correct response, mark the response which you consider the best. In any case, choose *ONLY ONE* response for each item.
5. You have to mark all your responses *ONLY* on the separate Answer Sheet provided.
6. **All** items carry equal marks.
7. Before you proceed to mark in the Answer Sheet the response to various items in the Test Booklet, you have to fill in some particulars in the Answer Sheet as per instructions sent to you with your Admission Certificate.
8. After you have completed filling in all your responses on the Answer Sheet and the examination has concluded, you should hand over to the invigilator only the *Answer Sheet*. You are permitted to take away with you the Test Booklet.
9. Sheets for rough work are appended in the Test Booklet at the end.
10. **Penalty for wrong Answers :**
THERE WILL BE PENALTY FOR WRONG ANSWERS MARKED BY A CANDIDATE IN THE OBJECTIVE TYPE QUESTION PAPERS.
(i) There are four alternatives for the answer to every question. For each question for which a wrong answer has been given by the candidate, **one-third** of the marks assigned to that question will be deducted as penalty.
(ii) If a candidate gives more than one answer, it will be treated as a **wrong answer** even if one of the given answers happens to be correct and there will be same penalty as above to that question.
(iii) If a question is left blank, i.e., no answer is given by the candidate, there will be **no penalty** for that question.

DO NOT OPEN THIS BOOKLET UNTIL YOU ARE TOLD TO DO SO

UPSC Civil Services Preliminary Exam 2001 Exam

Q1 In what way does the Indian Parliament exercise control over the administration?

- (a) Through Consultative Committees of various ministries
- (b) Through Parliamentary Committees
- (c) By making the administrators send periodic reports
- (d) By compelling the executive to issue writs

Q2 Who among the following organised the famous Chittagong armoury raid ?

- (a) Laxmi Sehgal
- (b) Surya Sen
- (c) Batukeshwar Datta
- (d) J.M. Sengupta

Q3 Consider the decadal Census data given below:

Decadal Population (in millions)

Year - Population

1961 - 10.7

1971 - 14.3

1981 - 16.2

1991 - 18.9

The above data refer to which one of the 'Population by Religion' Groups ?

- (a) Sikhs
- (b) Jains
- (c) Christians
- (d) Buddhists

Q4 Which of the following committees examined and suggested Financial Sector Reforms ?

- (a) Abid Hussain Committee
- (b) Bhagwati Committee
- (c) Chelliah Committee
- (d) Narasimham Committee

Q5 In which one of the following cities is the Lingaraja Temple located ?

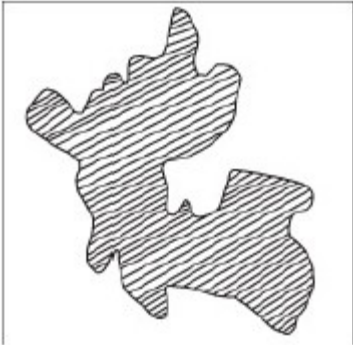
- (a) Bhubaneswar
- (b) Bijapur
- (c) Kolkata
- (d) Shravanabelagola

Q6 A London branch of the All-India Muslim League was established in 1908 under the presidency of

- (a) Agha Khan
-

- (b) Ameer Ali
- (c) Liaquat Ali Khan
- (d) M.A. Jinnah

Q7



The above map is the Union Territory of

- (a) Chandigarh
- (b) Daman and Diu
- (c) Dadra and Nagar Haveli
- (d) Pondicherry

Q8 Identify the correct order of the processes of soil-erosion from the following:

- (a) Splash erosion, Sheet erosion, Rill erosion, Gully erosion
- (b) Sheet erosion, Splash erosion, Gully erosion, Rill erosion
- (c) Rill erosion, Gully erosion, Sheet erosion, Splash erosion
- (d) Gully erosion, Rill erosion, Sheet erosion, Splash erosion

Q9 The new series of Wholesale Price Index (WPI) released by the Government of India is with reference to the base prices of

- (a) 1981-82
- (b) 1990-91
- (c) 1993-94
- (d) 1994-95

Q10 The chess player Alexi Shirov represents

- (a) Albania
 - (b) Kazhakstan
 - (c) Russia
 - (d) Spain
-

Q11 Consider the following organisations :

I. Atomic Minerals Directorate for Research and Exploration

II. Heavy Water Board

III. Indian Rare Earths Limited

IV. Uranium Corporation of India

Which of these is/are under the Department of Atomic Energy ?

(a) I only

(b) I and IV

(c) II, III and IV

(d) I, II, III and IV

Q12 Who among the following, was the President of the All-India States' Peoples' Conference in 1939 ?

(a) Jaya Prakash Narayan

(b) Jawaharlal Nehru

(c) Sheikh Abdullah

(d) Sardar Vallabhbhai Patel

Q13 Consider the following statements about the minorities in India :

I. The Government of India has notified five communities, namely, Muslims, Sikhs, Christians, Buddhists and Zoroastrians as Minorities.

II. The National Commission for Minorities was given statutory status in 1993.

III. The smallest religious minority in India are the Zoroastrians.

IV. The Constitution of India recognises and protects religious and linguistic minorities.

Which of these statements are correct ?

(a) II and III

(b) I and IV

(c) II, III and IV

(d) I, II and IV

Q14 The temperature and rainfall of a meteorological station are given below:

	J	F	M	A	M	J	J	A	S	O	N	D
Temperature (°C)	9.4	10.6	11.7	12.2	13.3	13.9	13.9	14.4	15.6	15.0	13.3	10.6
Rainfall (cm)	12.2	9.1	7.9	2.5	1.8	0.3	-	-	0.8	2.5	6.1	11.7

Average Temperature : 12.8 °C

Average Rainfall : 54.9 cm per annum

Identify the region having the above climatic pattern from amongst the following :

(a) Mediterranean region

(b) Monsoon region

- (c) Steppe region
- (d) N.W. European region

Q15 The theme of the World Development Report, 2001 is

- (a) From Plan to Market
- (b) Knowledge for Development
- (c) Attacking Poverty
- (d) The State in the Changing World

Q16 In which one of the following areas does the State Government NOT have control over its local bodies ?

- (a) Citizen's grievances
- (b) Financial matters
- (c) Legislation
- (d) Personnel matters

Q17 Who amongst the following Englishmen, first translated Bhagavad-Gita into English ?

- (a) William Jones
- (b) Charles Wilkins
- (c) Alexander Cunningham
- (d) John Marshall

Q18 Consider the following statements regarding the High Courts in India :

- I. There are eighteen High Courts in the country.
- II. Three of them have jurisdiction over more than one State.
- III. No Union Territory has a High Court of its own.
- IV. Judges of the High Court hold office till the age of 62.

Which of these statements is/are correct ?

- (a) I, II and IV
- (b) II and III
- (c) I and IV
- (d) IV only

Q19 The term National Income represents

- (a) Gross National Product at market prices minus depreciation
- (b) Gross National Product at market prices minus depreciation plus net factor income from abroad
- (c) Gross National Product at market prices minus depreciation and indirect taxes plus subsidies
- (d) Gross National Product at market prices minus net factor income from abroad

Q20 Match List I with List II and select the correct answer using the codes given below the Lists :

List I - List II

(Local Wind) - (Region)

I. Fohn - (A) Argentina

II. Samun - (B) Kurdistan

III. Santa Ana - (C) California

IV. Zonda - (D) Alps

Codes:

(a) I-B, II-D, III-A, IV-C

(b) I-D, II-B, III-C, IV-A

(c) I-B, II-D, III-C, IV-A

(d) I-D, II-B, III-A, IV-C

Q21 The given map shows four towns of Central Asian region marked as 1, 2, 3, and 4. Identify these from the following list and select the correct answer using the codes given below :

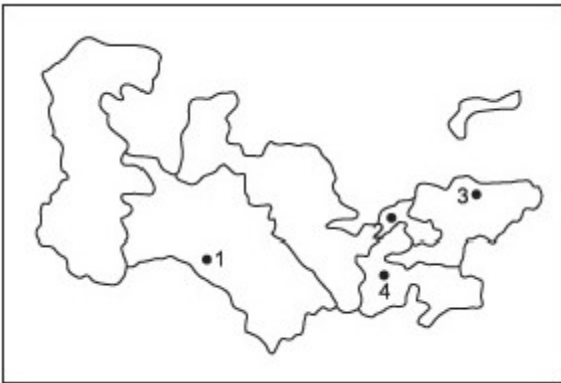
Towns:

A. Bishkek

B. Ashkhabad

C. Tashkent

D. Dushanbe



Codes :

(a) A-3, B-1, C-2, D-4

(b) A-3, B-1, C-4, D-2

(c) A-1, B-3, C-2, D-4

(d) A-1, B-3, C-4, D-2

Q22 Mekong-Ganga Cooperation Project is

(a) an irrigation project involving India and Myanmar

(b) a joint tourism initiative of some Asian countries

(c) a hydroelectric power project involving India, Bangladesh and Myanmar

(d) a defence and security agreement of India with its eastern neighbours

Q23 Match List I with List II and select the correct answer using the codes given below the Lists :

List I - List II

(Amendments to the Constitution) - (Contents)

I. The Constitution (Sixty-ninth Amendment) Act, 1991 - (A) Establishment of State level Rent Tribunals Act, 1991

II. The Constitution (Seventy-fifth Amendment) Act, 1994 -(B) No reservations for Scheduled Castes in Panchayats in Arunachal Pradesh

III. The Constitution (Eightieth Amendment) Act, 2000 - (C) Constitution of Panchayats in Villages or at other local levels

IV. The Constitution (Eighty-third Amendment) Act, 2000 - (D) Accepting the recommendations of the Tenth Finance Commission

(E) According the status of National Capital Territory to Delhi

Codes :

(a) I-E, II-A, III-D, IV-B

(b) I-A, II-E, III-C, IV-D

(c) I-E, II-A, III-C, IV-D

(d) I-A, II-E, III-D, IV-B

Q24 The largest number of Buddhists is found in

(a) Bihar

(b) Karnataka

(c) Maharashtra

(d) Uttar Pradesh

Q25 Who amongst the following was the Chairman of ISRO when INSAT-3B was launched ?

(a) Anil Kakodkar

(b) Abdul Kalam

(c) K. Kasturirangan

(d) U. R. Rao

Q26 Assertion (A):

The Battle of Khanua was certainly more decisive and significant than the First Battle of Panipat.

Reason (R):

Rana Sanga, the Rajput hero, was certainly a more formidable adversary than Ibrahim Lodi.

(a) Both A and R are individually true, and R is the correct explanation of A

(b) Both A and R are individually true, but R is NOT a correct explanation of A

(c) A is true, but R is false

(d) A is false, but R is true

Q27 Assertion (A):

Anti-cyclonic conditions are formed in winter season when atmospheric pressure is high and air temperatures are low.

Reason (R):

Winter rainfall in Northern India causes development of anticyclonic conditions with low temperatures.

- (a) Both A and R are individually true, and R is the correct explanation of A
- (b) Both A and R are individually true, but R is NOT a correct explanation of A
- (c) A is true, but R is false
- (d) A is false, but R is true

Q28 Assertion (A):

Harshavardhana convened the Prayag Assembly.

Reason (R):

He wanted to popularise only the Mahayana form of Buddhism.

- (a) Both A and R are individually true, and R is the correct explanation of A
- (b) Both A and R are individually true, but R is NOT a correct explanation of A
- (c) A is true, but R is false
- (d) A is false, but R is true

Q29 Assertion (A):

There was an increase in industrial production during 1999-2000.

Reason (R):

The period witnessed a stable exchange rate and improved business sentiments.

- (a) Both A and R are individually true, and R is the correct explanation of A
- (b) Both A and R are individually true, but R is NOT a correct explanation of A
- (c) A is true, but R is false
- (d) A is false, but R is true

Q30 Assertion (A):

India's software exports increased at an average growth rate of 50% since 1995-96.

Reason (R):

Indian software companies were cost-effective and maintained international quality.

- (a) Both A and R are individually true, and R is the correct explanation of A
- (b) Both A and R are individually true, but R is NOT a correct explanation of A
- (c) A is true, but R is false
- (d) A is false, but R is true

Q31 Assertion (A):

Ceiling on foreign exchange for a host of current account transaction heads was lowered in the year 2000.

Reason (R):

There was a fall in foreign currency assets also.

- (a) Both A and R are individually true, and R is the correct explanation of A
- (b) Both A and R are individually true, but R is NOT a correct explanation of A
- (c) A is true, but R is false
- (d) A is false, but R is true

Q32 Assertion (A):

During the Neap Tides, the high tide is lower and the low tide is higher than usual.

Reason (R):

The Neap Tide, unlike the Spring Tide, occurs on the New Moon instead of on the Full Moon.

- (a) Both A and R are individually true, and R is the correct explanation of A
- (b) Both A and R are individually true, but R is NOT a correct explanation of A
- (c) A is true, but R is false
- (d) A is false, but R is true

Q33 The prices at which the Government purchases food grains for maintaining the public distribution system and for building up buffer-stocks is known as

- (a) minimum support prices
- (b) procurement prices
- (c) issue prices
- (d) ceiling prices

Q34 The theme of Indian Science Congress, 2001 was

- (a) "Food Nutrition and Environmental Security"
- (b) "Arrest declining interest in pure sciences"
- (c) "Make India energy self-sufficient"
- (d) "Make India IT Superpower"

Q35 Consider the following statements regarding environment issues of India:

- I. Gulf of Manner is one of the biosphere reserves.
- II. The Ganga Action Plan, phase II has been merged with the National River Conservation Plan.
- III. The National Museum of Natural History at New Delhi imparts non-formal education in environment and conservation.
- IV. Environmental Information System (ENVIS) acts as a decentralised information network for environmental information.

Which of these statements are correct ?

- (a) I, II and IV
- (b) I, II, III and IV
- (c) II and III
- (d) I, III and IV

Q36 Which one of the Chola kings conquered Ceylon ?

- (a) Aditya I
- (b) Rajaraja I
- (c) Rajendra
- (d) Vijayalaya

Q37 Consider the following statements regarding the Armed Forces :

- I. First batch of women pilots was commissioned in Indian Air Force in 1996.
- II. Officers' Training Academy is located in Nagpur.
- III. Southern Command of Indian Navy has its Headquarters at Chennai.
- IV. One of the Regional Headquarters of Coast Guard is located at Port Blair.

Which of these statements are correct ?

- (a) I, II, III and IV
- (b) II, III and IV
- (c) III only
- (d) II and IV

Q38 Consider the following statements regarding power sector in India :

- I. The installed capacity of power generation is around 95000 MW.
- II. Nuclear plants contribute nearly 15% of total power generation.
- III. Hydroelectricity plants contribute nearly 40% of total power generation.
- IV. Thermal plants at present account for nearly 80% of total power generation.

Which of these statements is/are correct ?

- (a) I only
- (b) II and III
- (c) III and IV
- (d) I and IV

Q39 If a new State of the Indian Union is to be created, which one of the following Schedules of the Constitution must be amended ?

- (a) First
- (b) Second
- (c) Third
- (d) Fifth

Q40 National Agriculture Insurance Scheme replacing Comprehensive Crop Insurance Scheme was introduced in the year

- (a) 1997
 - (b) 1998
 - (c) 1999
 - (d) 2000
-

Q41 Who among the following presided over the Buddhist Council held during the reign of Kanishka at Kashmir ?

- (a) Parsva
- (b) Nagarjuna
- (c) Sudraka
- (d) Vasumitra

Q42 Match List I with List II and select the correct answer using the codes given below the Lists :

List I -List II

(Country) - (President)

I. Columbia - (A) Vicente Fox

II. The Philippines - (B) Hugo Chavez

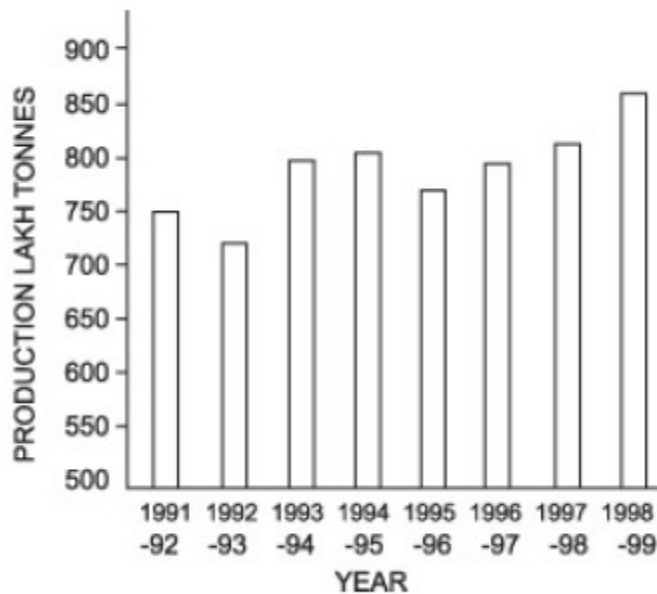
III. Mexico - (C) Gloria Macapagal Arroya

IV. Venezuela - (D) Andres Pastrana

Codes :

- (a) I-D, II-C, III-B, IV-A
- (b) I-C, II-D, III-B, IV-A
- (c) I-D, II-C, III-A, IV-B
- (d) I-C, II-D, III-A, IV-B

Q43



The annual agricultural production of a product for the period 1991-92 to 1998-99 is shown in the figure given above

Which one of the following is the product in Q ?

- (a) Pulses
- (b) Wheat
- (c) Oilseeds
- (d) Rice

Q44 Consider the following States :

- I. Gujarat
- II. Karnataka
- III. Maharashtra
- IV. Tamil Nadu.

The descending order of these States with reference to their level of Per Capita Net State Domestic Product is

- (a) I, III, IV, II
- (b) III, I, II, IV
- (c) I, III, II, IV
- (d) III, IV, I, II

Q45 Consider the following statements regarding the political parties in India:

- I. The Representation of the People Act, 1951 provides for the registration of political parties.
- II. Registration of political parties is carried out by the Election Commission.
- III. A national level political party is one which is recognised in four or more States.

Which of these statements are correct ?

- (a) I, only
- (b) I and III
- (c) II and IV
- (d) I, II and III

Q46 Match List I with List II and select the correct answer using the codes given below the Lists :

List I - List II

(Institute) - (Location)

- I. Central Institute of Medicinal and Aromatic Plants - (A) Chandigarh
- II. Centre for DNA Finger Printing and Diagnostics - (B) Hyderabad
- III. Institute of Microbial Technology - (C) New Delhi
- IV. National Institute of Immunology - (D) Lucknow

Codes:

- (a) I-B, II-D, III-A, IV-C
- (b) I-D, II-B, III-A, IV-C
- (c) I-B, II-D, III-C, IV-A
- (d) I-D, II-B, III-C, IV-A

Q47 Which one of the following animals was NOT represented on the seals and terracotta art of the Harappan culture ?

- (a) Cow
- (b) Elephant
- (c) Rhinoceros
- (d) Tiger

Q48 The range of Agni-II missile is around

- (a) 500 km
- (b) 2000 km
- (c) 3500 km
- (d) 5000 km

Q49 The approximate age of the Aravallis range is

- (a) 370 million years
- (b) 470 million years
- (c) 570 million years
- (d) 670 million years

Q50 Consider the following :

- I. Market borrowing
- II. Treasury bills
- III. Special securities issued to RBI

Which of these is/are component(s) of internal debt ?

- (a) I only
- (b) I and II
- (c) II only
- (d) I, II and III

Q51 Match List I with List II and select the correct answer using the codes given below the Lists :

List I - List II

(Article of the Constitution) - (Content)

- I. Article 54 - (A) Election of the President of India
- II. Article 75 - (B) Appointment of the Prime Minister and Council of Ministers
- III. Article 155 - (C) Appointment of the Governor of a State
- IV. Article 164 - (D) Appointment of the Chief Minister and Council of Ministers of a State

(E) Composition of Legislative Assemblies

Codes:

- (a) I-A, II-B, III-C, IV-D
 - (b) I-A, II-B, III-D, IV-E
 - (c) I-B, II-A, III-C, IV-E
 - (d) I-B, II-A, III-D, IV-C
-

Q52 Match List I with List II and select the correct answer using the codes given below the Lists :

List I - List II

(Important Day) - (Date)

I. World Environment Day - (A) March 20

II. World Forestry Day - (B) June 5

III. World Habitat Day - (C) September 16

IV. World Ozone Day - (D) October 3

(E) December 10

Codes:

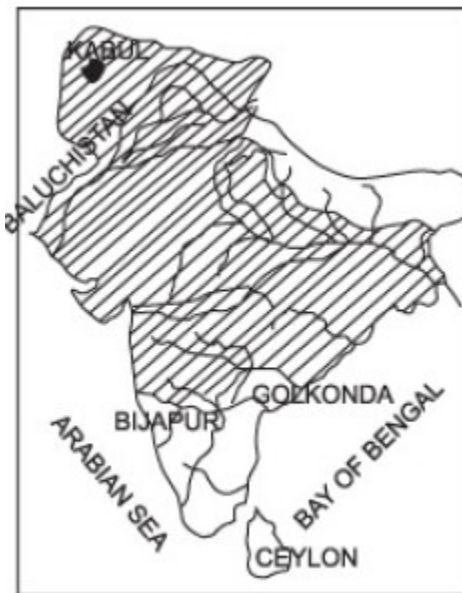
(a) I-B, II-A, III-D, IV-E

(b) I-A, II-B, III-D, IV-C

(c) I-A, II-B, III-C, IV-D

(d) I-B, II-A, III-D, IV-C

Q53



The shaded area in the above map shows the empire of

(a) Ala-ud-din Khilji

(b) Mohammad Tughlaq

(c) Shah Jahan

(d) Aurangzeb

Q54 Consider the following statements regarding Reserve Bank of India :

I. It is a banker to the Central Government.

II. It formulates and administers monetary policy.

III. It acts as an agent of the Government in respect of India's membership of IMF.

IV. It handles the borrowing programme of Government of India.

Which of these statements are correct ?

(a) I and II

(b) II, III and IV

(c) I, II, III and IV

(d) III and IV

Q55 Consider the following statements :

I. Most magmas are a combination of liquid, solid and gas.

II. Water vapour and carbon dioxide are the principal gases dissolved in a magma.

III. Basaltic magma is hotter than the silicic magma.

IV. The magma solidified between sedimentary rocks in a horizontal position is known as dike.

Which of these statements are correct ?

(a) I, II and III

(b) II, III and IV

(c) I and IV

(d) I, II and IV

Q56 Consider the following schemes launched by the Union Government :

I. Antyodaya Anna

II. Gram Sadak Yojana

III. Sarvapriya

IV. Jawahar Gram Samridhhi Yojana.

Which of these were announced in the year 2000 ?

(a) I and II

(b) II and IV

(c) III and IV

(d) I, II and III

Q57 Match List I with List II and select the correct answer using the codes given below the Lists :

List I - List II

(Books) - (Author)

I. The Struggle in My Life - (A) Lech Walesa

II. The Struggle and the Triumph - (B) Nelson Mandela

III. Friends and Foes - (C) Leonid Brezhnev

IV. Rebirth - (D) Zulfikar Ali Bhutto

(E) Sheikh Mujibur Rehman

Codes:

- (a) I-A, II-B, III-E, IV-C
- (b) I-B, II-A, III-E, IV-C
- (c) I-A, II-B, III-C, IV-D
- (d) I-B, II-A, III-C, IV-D

Q58 Hoysala monuments are found in

- (a) Hampi and Hospet
- (b) Halebid and Belur
- (c) Mysore and Bangalore
- (d) Sringeri and Dharwar

Q59 Consider the following statements regarding the earthquakes :

- I. The intensity of earthquake is measured on Mercalli scale.
- II. The magnitude of an earthquake is a measure of energy released.
- III. Earthquake magnitudes are based on direct measurements of the amplitude of seismic waves.
- IV. In the Richter scale, each whole number demonstrates a hundredfold increase in the amount of energy released.

"Which of these statements are correct ?

- (a) I, II and III
- (b) II, III and IV
- (c) I and IV
- (d) I and III

Q60 Which Article of the Constitution provides that it shall be the endeavour of every State to provide adequate facility for instruction in the mother tongue at the primary stage of education ?

- (a) Article 349
- (b) Article 350
- (c) Article 350-A
- (d) Article 351

Q61 Who among the following Indian rulers established embassies in foreign countries on modern lines ?

- (a) Haider Ali
- (b) Mir Qasim
- (c) Shah Alam II
- (d) Tipu Sultan

Q62 A great landslide caused by an earthquake killed hundreds of people in January 2001 near

- (a) San Salvador
-

- (b) San Jose
- (c) Managua
- (d) Guatemala City

Q63



In the above map, the black marks show the distribution of

- (a) Asbestos
- (b) Gypsum
- (c) Limestone
- (d) Mica

Q64 Consider the following factors regarding an industry :

- I. Capital investments
- II. Business turnover
- III. Labour force
- IV. Power consumption.

Which of these determine the nature a size of the industry ?

- (a) I, III and IV
 - (b) I, II and IV
 - (c) II, III and IV
-

(d) II and III

Q65 Which of the following pairs is NOT correctly matched ?

- (a) India's first Technicolour film ... Jhansi Ki Rani
- (b) India's first 3-D film ... My Dear Kuttichat
- (c) India's first insured film ... Taal
- (d) India's first actress to win the Bharat Ratna ... Meena Kumari

Q66 Match List I with List II and select the correct answer using the codes given below the Lists :

List I - List II

(Dancer) - (Dance)

- I. Kalamandalam Kshemavaty - (A) Kathakali
- II. Kottakkal Sivaraman - (B) Manipuri
- III. Lakshmi Viswanathan - (C) Mohiniyattam
- IV. N. Madhabi Devi - (D) Bharata Natyam

Codes:

- (a) I-A, II-C, III-B, IV-D
- (b) I-C, II-A, III-D, IV-B
- (c) I-A, II-C, III-D, IV-B
- (d) I-C, II-A, III-B, IV-D

Q67 Match List I with List II and select the correct answer using the codes given below the Lists :

List I - List II

(Bhakti Saint) - (Profession)

- I. Namdev - (A) Barber
- II. Kabir - (B) Weaver
- III. Ravidas - (C) Tailor
- IV. Sena - (D) Cobbler

Codes:

- (a) I-B, II-C, III-A, IV-D
- (b) I-C, II-B, III-D, IV-A
- (c) I-C, II-B, III-A, IV-D
- (d) I-B, II-C, III-D, IV-A

Q68 The most appropriate measure of a country's economic growth is its

- (a) Gross Domestic Product
- (b) Net Domestic Product
- (c) Net National Product
- (d) Per Capita Real Income

Q69 The Supreme Court of India tenders advice to the President on a matter of law or fact

- (a) on its own initiative
-

- (b) only if he seeks such advice
- (c) only if the matter relates to the Fundamental Rights of citizens
- (d) only if the issue poses a threat to the unity and integrity of the country

Q70 Falun Gong is

- (a) an ethnic minority in Eastern China
- (b) an insurgency outfit in Western China
- (c) a pro-democracy movement in China
- (d) a spiritual movement in China

Q71 The Hunter Commission was appointed after the

- (a) Black hole incident
- (b) Jalianwallabagh massacre
- (c) Uprising of 1857
- (d) Partition of Bengal

Q72 Who amongst the following was the first to state that the Earth was spherical?

- (a) Aristotle
- (b) Copernicus
- (c) Ptolemy
- (d) Strabo

Q73 Match List I with List II and select the correct answer using the codes given below the Lists :

List I - List II

(Term) - (Explanation)

I. Fiscal deficit - (A) Excess of Total Expenditure over Total Receipts

II. Budget deficit - (B) Excess of Revenue Expenditure over Revenue Receipts

III. Revenue deficit - (C) Excess of Total Expenditure over Total Receipts less borrowings

IV. Primary deficit - (D) Excess of Total Expenditure over Total Receipts less borrowings and Interest Payments

Codes:

- (a) I-C, II-A, III-B, IV-D
- (b) I-D, II-C, III-B, IV-A
- (c) I-A, II-C, III-B, IV-D
- (d) I-C, II-A, III-D, IV-B

Q74 Consider the following organisations :

- I. International Bank for Reconstruction and Development**
 - II. International Finance Corporation**
 - III. International Fund for Agricultural Development**
 - IV. International Monetary Fund**
-

Which of these are agencies of the United Nations ?

- (a) I and II
- (b) II and III
- (c) III and IV
- (d) I, II, III and IV

Q75 Match List I with List II and select the correct answer using the codes given below the Lists :

List I - List II

(Person) - (Achievement)

I. Deep Sen Gupta - (A) India's youngest International Master in the Sangli International Chess Tournament, 2000

II. P. Hari Krishna - (B) The first Indian ever to win a gold in discus in the World Athletic Championship in Santiago, 2000

III. Seema Antil - (C) Won the title in the Asian Junior Chess Tournament in Mumbai, 2000

IV. Tejas Bakre - (D) Won the Under-12 title in the World Youth Chess Festival in Orpesa, 2000

Codes:

- (a) I-D, II-C, III-B, IV-A
- (b) I-B, II-D, III-A, IV-C
- (c) I-D, II-A, III-B, IV-C
- (d) I-B, II-A, III-C, IV-D

Q76 Under the Permanent Settlement, 1793, the zamindars were required to issue pattas to the farmers which were not issued by many of the zamindars. The reason was

- (a) the zamindars were trusted by the farmers
- (b) there was no official check upon the zamindars
- (c) it was the responsibility of the British Government
- (d) the farmers were not interested in getting pattas

Q77 If the stars are seen to rise perpendicular to the horizon by an observer, he is located on the

- (a) Equator
- (b) Tropic of Cancer
- (c) South Pole
- (d) North Pole

Q78 Match List I with List II and select the correct answer using the codes given below the Lists :

List I - List II

(Person) - (Distinguished as)

I. Santosh Yadav - (A) T.V. Host

II. Oprah Winfrey - (B) Journalist

III. Oscar Wilde - (C) Mountaineer

IV. P. Sainath - (D) Dramatist and Author

Codes:

- (a) I-C, II-A, III-D, IV-B
-

- (b) I-A, II-C, III-B, IV-D
(c) I-C, II-A, III-B, IV-D
(d) I-A, II-C, III-D, IV-B

Q 79



In the shaded area of the above map, the mean temperature for the month of July varies between

- (a) 22.5 °C — 25.0 °C
(b) 25.0 °C — 27.5 °C
(c) 27.5 °C — 30.0 °C
(d) 30.0 °C — 32.5 °C

Q80 The Union Budget, 2000 awarded a Tax Holiday for the North-Eastern Region to promote industrialisation for

- (a) 5 years
(b) 7 years
(c) 9 years
(d) 10 years

Q81 Consider the following statements :

- I. Arya Samaj was founded in 1835.
II. Lala Lajpat Rai opposed the appeal of Arya Samaj to the authority of Vedas in support of its social reform programmes.
III. Under Keshab Chandra Sen, the Brahmo Samaj campaigned for women's education.
IV. Vinoba Bhave founded the Sarvodaya Samaj to work among refugees.
-

Which of these statements are correct ?

- (a) I and II
- (b) II and III
- (c) II and IV
- (d) III and IV

Q82 Consider the following taxes :

- I. Corporation tax
- II. Customs duty
- III. Wealth tax
- IV. Excise duty

Which of these is/are indirect taxes ?

- (a) I only
- (b) II and IV
- (c) I and III
- (d) II and III

Q83 The Mongols under Gengis Khan invaded India during the reign of

- (a) Balban
- (b) Feroze Tughlaq
- (c) Iltutmish
- (d) Muhammad bin Tughlaq

Q84 The high density of population in Nile Valley and Island of Java is primarily due to

- (a) intensive agriculture
- (b) industrialisation
- (c) urbanisation
- (d) topographic constraints

Q85 The largest share of Foreign Direct Investment (1997-2000) went to

- (a) Food and food-product sector
- (b) Engineering sector
- (c) Electronics and electric equipment sector
- (d) Service sector

Q86 Which one of the following duties is NOT performed by the Comptroller and Auditor General of India ?

- (a) To audit and report on all expenditure from the Consolidated Fund of India
 - (b) To audit and report on all expenditure from the Contingency Funds and Public Accounts
 - (c) To audit and report on all trading, manufacturing, profit and loss accounts
 - (d) To control the receipt and issue of public money, and to ensure that the public revenue is lodged in the exchequer
-

Q87 Which one of the following pairs is correctly matched ?

- (a) Harappan Civilisation ... Painted Grey Ware
- (b) The Kushans ... Gandhara School of Art
- (c) The Mughals ... Ajanta Paintings
- (d) The Marathas ... Pahari School of Painting

Q88 Consider the following statements made about the sedimentary rocks :

- I. Sedimentary rocks are formed at Earth's surface by the hydrological system.
- II. The formation of sedimentary rocks involves the weathering of pre-existing rocks.
- III. Sedimentary rocks contain fossils.
- IV. Sedimentary rocks typically occur in layers.

Which of these statements are correct ?

- (a) I and II
- (b) I and IV
- (c) II, III and IV
- (d) I, II, III and IV

Q89 Match List I with List II and select the correct answer using the codes given below the Lists :

List I - List II

(Publisher) - (Publication)

- I. Ministry of Industry - (A) Report on Currency and Finance
- II. Central Statistical Organisation - (B) Economic Survey
- III. Reserve Bank of India - (C) Wholesale Price Index
- IV. Ministry of Finance - (D) National Accounts Statistics

Codes:

- (a) I-D, II-C, III-B, IV-A
- (b) I-C, II-D, III-A, IV-B
- (c) I-D, II-C, III-A, IV-B
- (d) I-C, II-D, III-B, IV-A

Q90 Match List I with List II and select the correct answer using the codes given below the Lists :

List I - List II

(Award / Prize) - (Recipient)

- I. Indira Gandhi Prize for Peace, Disarmament - (A) Archbishop Desmond Tutu
- II. Jamnalal Bajaj Award - (B) Dr. Gurudev Khush
- III. International Gandhi Peace Prize - (C) Dr. M.S. Swaminathan
- IV. Wolf Prize - (D) Nelson Mandela

Codes:

- (a) I-A, II-C, III-D, IV-B
 - (b) I-C, II-A, III-D, IV-B
 - (c) I-A, II-C, III-B, IV-D
 - (d) I-C, II-A, III-B, IV-D
-

Q91 Which one of the following statement correctly describes the Fourth Schedule of the Constitution of India ?

- (a) It lists the distribution of power between the Union and the States**
- (b) It contains the languages listed in the Constitution**
- (c) It contains the provisions regarding the administration of tribal areas**
- (d) It allocates seats in the Council of States**

Q92 Which among the following ports was called Babul Makka (Gate of Makka) during the Mughal Period ?

- (a) Calicut**
- (b) Broach**
- (c) Cambay**
- (d) Surat**

Q93 Volcanic eruptions do not occur in the

- (a) Baltic Sea**
- (b) Black Sea**
- (c) Caribbean Sea**
- (d) Caspian Sea**

Q94 Who among the following leaders proposed to adopt Complete Independence as the goal of the Congress in the Ahmedabad session of 1920 ?

- (a) Abul Kalam Azad**
- (b) Hasrat Mohani**
- (c) Jawaharlal Nehru**
- (d) Mohandas Karamchand Gandhi**

Q95 Match List I with List II and select the correct answer using the codes given below the Lists :

List I - List II

(Sports Women) - (Sport)

I. Anjali Vedpathak - (A) Athletics

II. Mouma Das - (B) Gymnastics

III. Neelam Singh - (C) Rifle Shooting

IV. Tumpa Debnath - (D) Table Tennis

(E) Chess

Codes:

(a) I-C, II-D, III-B, IV-E

(b) I-D, II-C, III-A, IV-B

(c) I-D, II-C, III-B, IV-E

(d) I-C, II-D, III-A, IV-B

Q96 A class of animals known as Marsupials is a characteristic feature of

- (a) Africa
- (b) Australia
- (c) South America
- (d) South-East Asia

Q97 Match the following Organisations with their Locations

- A. ISRO - 1. Ahmedabad
- B. IIRS - 2. Dehradun
- C. NRSA - 3. Bangalore
- D. SAC - 4. Hyderabad

- (a) A-1, B-2, C-3, D-4
- (b) A-3, B-2, C-4, D-1
- (c) A-2, B-4, C-3, D-1
- (d) A-4, B-3, C-2, D-1

Q98 Which of the following pairs is correctly matched ?

- (a) Dewan-i-bandagani ... Tughlaq
- (b) Dewan-i-Mustakhraj ... Balban
- (c) Dewan-i-Kohi ... Alauddin Khilji
- (d) Dewan-i-Arz ... Muhammad Tughlaq

Q99 The earlier name of WTO was

- (a) UNCTAD
- (b) GATT
- (c) UNIDO
- (d) OECD

Q100 Two wires have their lengths, diameters and resistivities, all in the ratio of 1 : 2. If the resistance of the thinner wire is 10 ohms, the resistance of the thicker wire is

- (a) 10 ohms
- (b) 5 ohms
- (c) 20 ohms
- (d) 40 ohms

Q101 Assertion (A):

A stick is dipped in water in a slanting position. If observed sideways, the stick appears short and bent at the surface of water.

Reason (R):

The light coming from the stick undergoes scattering from water molecules giving the stick a short and bent appearance.

- (a) Both A and R are individually true and R is the correct explanation of A
- (b) Both A and R are individually true but R is NOT a correct explanation of A
- (c) A is true but R is false
- (d) A is false but R is true

Q102 Assertion (A):

A piece of copper and a piece of glass are heated to the same temperature. When touched, thereafter, the copper piece appears hotter than the glass piece.

Reason (R):

The density of copper is more than that of glass.

- (a) Both A and R are individually true and R is the correct explanation of A
- (b) Both A and R are individually true but R is NOT a correct explanation of A
- (c) A is true but R is false
- (d) A is false but R is true

Q103 Assertion (A):

The boiling point of water decreases as the altitude increases.

Reason (R):

The atmospheric pressure increases with altitude.

- (a) Both A and R are individually true and R is the correct explanation of A
- (b) Both A and R are individually true but R is NOT a correct explanation of A
- (c) A is true but R is false
- (d) A is false but R is true

Q104 When lightwaves pass from air to glass, the variables affected are

- (a) Wavelength, frequency and velocity
- (b) Velocity and frequency
- (c) Wavelength and frequency
- (d) Wavelength and velocity

Q105 When water is heated from 0°C to 10°C, its volume

- (a) increases
- (b) decreases
- (c) does not change
- (d) first decreases and then increases

Q106 Consider the following statements :

In a nuclear reactor, self-sustained chain reaction is possible, because
I. more neutrons are released in each of the fission reactions.

- II. the neutrons immediately take part in the fission process.
- III. the fast neutrons are slowed down by Graphite.
- IV. every neutron released in the fission reaction initiates further fission.

Which of these statements are correct ?

- (a) I, II and III
- (b) I and III
- (c) II and IV
- (d) II, III and IV

Q107 Match List I with List II and select the correct answer using the codes given below the Lists :

List I - List II

(Characteristic) - (Particle)

- I. Zero mass - (A) Positron
- II. Fractional charge - (B) Neutrino
- III. Fractional spin - (C) Quark
- IV. Integral spin - (D) Phonon

Codes :

- (a) I-B, II-C, III-A, IV-D
- (b) I-C, II-B, III-D, IV-A
- (c) I-B, II-C, III-D, IV-A
- (d) I-C, II-B, III-A, IV-D

Q108 Who is the scientist in whose honour the "Chandra" X-ray telescope has been named ?

- (a) Chandrasekhar Venkat Raman
- (b) Jagdish Chandra Bose
- (c) Prafulla Chandra Roy
- (d) Subrahmanyan Chandrasekhar

Q109 The mass of a body on Earth is 100 kg (acceleration due to gravity, $g_e = 10 \text{ m/s}^2$). If acceleration due to gravity on the Moon $g_m/6$, then the mass of the body on the moon is

- (a) $100/6 \text{ kg}$
- (b) 60 kg
- (c) 100 kg
- (d) 600 kg

Q110 Consider the following statements :

A simple pendulum is set into oscillation. Then

- I. the acceleration is zero when the bob passes through the mean position.
- II. in each cycle the bob attains a given velocity twice.
- III. both acceleration and velocity of the bob are zero when it reaches its extreme position during its oscillation.
- IV. the amplitude of oscillation of the simple pendulum decreases with time.

Which of these statements are correct ?

- (a) I and II
- (b) III and IV
- (c) I, II and IV
- (d) II, III and IV

Q111 Cloudy nights are warmer compared to clear cloudless nights, because clouds

- (a) prevent cold waves from the sky from descending on Earth
- (b) reflect back heat given off by Earth
- (c) produce heat and radiate it towards Earth
- (d) absorb heat from the atmosphere and send it towards Earth

Q112 Which of the following weather conditions is indicated by a sudden fall in barometer reading ?

- (a) Stormy weather
- (b) Calm weather
- (c) Cold and dry weather
- (d) Hot and sunny Weather

Q113 A radioactive substance has a half-life of four months. Three-fourth of the substance would decay in

- (a) 3 months
- (b) 4 months
- (c) 8 months
- (d) 12 months

Q114 The following table shows the percentage change in the consumption of electricity by five towns P, Q, R, S, T from 1986 to 1988 :

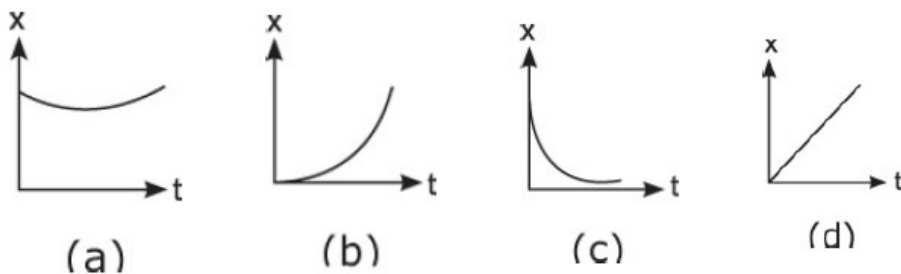
Town	Per cent change	
	From 1986 to 1987	From 1987 to 1988
P	+8	-18
Q	-15	+11
R	+6	+9
S	-7	-5
T	+13	-6

If town T consumed 500,000 units in 1986, how much did it consume in 1988 ?

- (a) 371,000 units
-

- (b) 531,100 units
- (c) 551,100 units
- (d) 571,100 units

Q115 Which of the following distance-time graph ($x - t$) represents one-dimensional uniform motion?



Q116 Assertion (A):

A Chemical reaction becomes faster at higher temperatures.

Reason (R):

At higher temperatures, molecular motion becomes more rapid.

- (a) Both A and R are individually true and R is the correct explanation of A
- (b) Both A and R are individually true but R is NOT a correct explanation of A
- (c) A is true but R is false
- (d) A is false but R is true

Q117 Which one of the following is NOT radioactive ?

- (a) Astatine
- (b) Francium
- (c) Tritium
- (d) Zirconium

Q118 Which one of the following is the correct sequence in increasing order of molecular weights of the hydrocarbons ?

- (a) Methane, ethane, propane and butane
 - (b) Propane, butane, ethane and methane
 - (c) Butane, ethane, propane and methane
 - (d) Butane, propane, ethane and methane
-

Q119 In an atom, the order of filling up of the orbitals is governed by

- (a) Aufbau principle
- (b) Heisenberg's uncertainty principle
- (c) Hund's rule
- (d) Pauli's exclusion principle

Q120 An aqueous solution of copper sulphate is acidic in nature because the salt undergoes

- (a) dialysis
- (b) electrolysis
- (c) hydrolysis
- (d) photolysis

Q121 Consider the following statements with reference to the Periodic Table of chemical elements :

I. Ionisation potential gradually decreases along a period.

II. In a group of elements, electron affinity decreases as the atomic weight increases.

III. In a given period, electronegativity decreases as the atomic number increases.

Which of these statement(s) is/are correct ? (

- (a) I only
- (b) II only
- (c) I and III
- (d) II and III

Q122 Quartzite is metamorphosed from

- (a) Limestone
- (b) Obsidian
- (c) Sandstone
- (d) Shale

Q123 Which of the following cell organelles play the most significant role in protein synthesis ?

- (a) Lysosome and Centrosome
- (b) Endoplasmic reticulum and Ribosome
- (c) Golgi apparatus and Mitochondria
- (d) Lysosome and Mitochondria

Q124 Assertion (A):

Scientists can cut apart and paste together DNA molecules at will, regardless of the source of the molecules.

Reason (R):

DNA fragments can be manipulated using restriction endonucleases and DNA ligases.

- (a) Both A and R are individually true and R is the correct explanation of A
 - (b) Both A and R are individually true but R is NOT a correct explanation of A
 - (c) A is true but R is false
 - (d) A is false but R is true
-

Q125 The cellular and molecular control of programmed cell death is known as

- (a) Apoptosis**
- (b) Ageing**
- (c) Degeneration**
- (d) Necrosis**

Q126 Which organelle in the cell, other than nucleus, contains DNA ?

- (a) Centriole**
- (b) Golgi apparatus**
- (c) Lysosome**
- (d) Mitochondrion**

Q127 Epiphytes are plants which depend on other plants for

- (a) food**
- (b) mechanical support**
- (c) shade**
- (d) water**

Q 128 Antigen is a substance which

- (a) destroys harmful bacteria**
- (b) is used to treat poisoning**
- (c) lowers body-temperature**
- (d) stimulates formation of antibody**

Q129 Which of the following features of DNA makes it uniquely suited to store and transmit genetic information from generation to generation ?

- (a) Complementarity of the two strands**
- (b) Double helix**
- (c) Number of base-pairs per turn**
- (d) Sugar-phosphate backbone**

Q130 The American multinational company, Monsanto has produced an insect-resistant cotton variety that is undergoing field- trials in India. A toxin gene from which ONE of the following bacteria has been transferred to this transgenic cotton ?

- (a) Bacillus subtilis**
 - (b) Bacillus thuringiensis**
 - (c) Bacillus amyloliquifaciens**
 - (d) Bacillus globii**
-

Q131 Match List I with List II and select the correct answer using the codes given below the Lists :

List I - List II

(Bone) - (Name)

I. Breast-bone - (A) Clavicle

II. Collar-bone - (B) Patella

III. Knee-cap - (C) Scapula

IV. Shoulder blade - (D) Sternum

Codes:

(a) I-D, II-A, III-C, IV-B

(b) I-A, II-D, III-C, IV-B

(c) I-A, II-D, III-B, IV-C

(d) I-D, II-A, III-B, IV-C

Q132 Consider the following statements :

I. Tapeworm is a hermaphrodite.

II. Round-worm has separate sexes.

III. Filaria is caused by a nematode.

IV. Guinea-worm is an annelid.

Which of these are correct ?

(a) I and II

(b) I, II and III

(c) III and IV

(d) II, III and IV

Q133 Match List I with List II and select the correct answer using the codes given below the Lists :

List I - List II

(Achievement in genetics) - (Scientists)

I. Discovery of transduction and Conjugation in bacteria - (A) Khurana

II. Establishing the sex-linked inheritance - (B) Kornberg

III. Isolation of DNA polymerase form E. coli - (C) Lederberg

IV. Establishing the complete genetic code - (D) Morgan

(E) Ochoa

Codes:

(a) I-D, II-C, III-B, IV-A

(b) I-C, II-D, III-A, IV-E

(c) I-D, II-C, III-A, IV-E

(d) I-C, II-D, III-B, IV-A

Q134 "Athlete's Foot" is a disease caused by

(a) Bacteria

(b) Fungus

(c) Protozoan

(d) Nematode

Q135 In the eye donation, which part of the eye is transplanted from the donor ?

- (a) Cornea
- (b) Lens
- (c) Retina
- (d) The whole eye

Q136 A man whose blood group is not known meets with a serious accident and needs blood transfusion immediately. Which one of the blood groups mentioned below and readily available in the hospital will be safe for transfusion ?

- (a) O, Rh-
- (b) O, Rh+
- (c) AB, Rh-
- (d) AB, Rh+

Q137 "Metastasis" is the process by which

- (a) cells divide rapidly under the influence of drugs
- (b) cancer cells spread through the blood or lymphatic system to other sites or organs
- (c) the chromosomes in cell nuclei are attached to the spindle before moving to the anaphase poles
- (d) cancer cells are successfully inhibited to divide any further

Q138 Match List I with List II and select the correct answer using the codes given below the Lists :

List I - List II

(Substance) - (Physiological role)

- I. Ptyalin - (A) Converts angiotensinogen in blood into angiotensin
- II. Pepsin - (B) Digests starch
- III. Renin - (C) Digests proteins
- IV. Oxytocin - (D) Hydrolyses fats

(E) Induces contraction of smooth muscles

Codes:

- (a) I-B, II-C, III-A, IV-E
- (b) I-C, II-D, III-B, IV-E
- (c) I-B, II-C, III-E, IV-A
- (d) I-C, II-A, III-B, IV-D

Q139 Solve the given equations :

$$x^2 + y^2 = 34$$

$$x^4 - y^4 = 544$$

The values of x and y are

- (a) $\pm 4, \pm 3$
-

- (b) $\pm 5, \pm 3$
- (c) $\pm 3, \pm 5$
- (d) $\pm 3, \pm 4$

Q140 A worker reaches his factory 3 minutes late if his speed from his house to the factory is 5 km/hr. If he walks at a speed of 6 km/hr, then he reaches the factory 7 minutes early. The distance of the factory from his house is

- (a) 4 km
- (b) 5 km
- (c) 6 km
- (d) 7 km

Q141 A conveyer belt delivers baggage at the rate of 3 tons in 5 minutes, and a second conveyer belt delivers baggage at the rate of 1 ton in 2 minutes. How much time will it take to get 33 tons of baggage delivered using both the conveyer belts ?

- (a) 25 minutes and 30 seconds
- (b) 30 minutes
- (c) 35 minutes
- (d) 40 minutes and 45 seconds

Q142 Water is filled in a container in such a manner that its volume doubles after every five minutes. If it takes 30 minutes for the container to be full, in how much time will it be one-fourth full ?

- (a) 7 minutes and 30 seconds
- (b) 10 minutes
- (c) 20 minutes
- (d) 25 minutes

Q143 A city has a population of 3,00,000 out of which 1,80,000 are males. 50% of the population is literate. If 70% of the males are literate, the number of literate females is

- (a) 24,000
- (b) 30,000
- (c) 54,000
- (d) 60,000

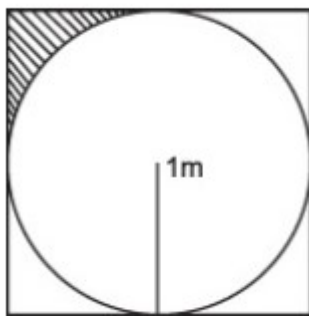
Q144 In a survey, it was found that 80% of those surveyed owned a car while 60% of those surveyed owned a mobile phone. If 55% owned both a car and a mobile phone, what per cent of those surveyed owned a car or a mobile phone or both ?

- (a) 65%
 - (b) 80%
 - (c) 85%
 - (d) 97.5%
-

Q145 In 1930, a person's age was 8 times that of his son. In 1938, the father's age became ten times that of his son's age in 1930. The ages of the son and father in 1940 were, respectively.

- (a) 16 years, 58 years
- (b) 15 years, 50 years
- (c) 14 years, 42 years
- (d) 13 years, 34 years

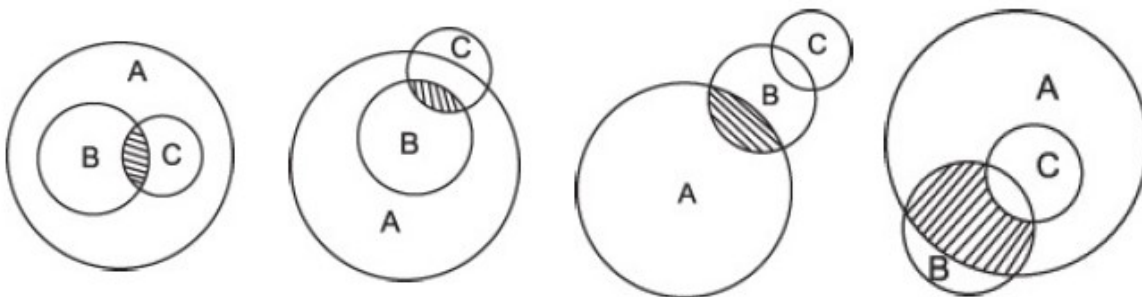
Q146



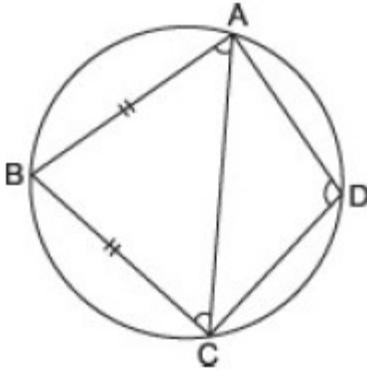
A circle of 1 m radius is drawn inside a square as shown in the figure given above. What is the area of the shaded portion in m^2 ?

- (a) $4 - \pi$
- (b) $1 + (\pi/2)$
- (c) $(1/4) - (\pi/4)$
- (d) $1 - (\pi/4)$

Q147 Most guitarists are bearded males. If A represents all males, B represents bearded males and C represents all male guitarists, then the correct diagram for their relation (shaded portion) is



Q 148



In the above figure, ABCD is a cyclic quadrilateral, $AB = BC$ and angle $BAC = 70^\circ$, then angle ADC is

- (a) 40°
- (b) 80°
- (c) 110°
- (d) 140°

Q149 Anand must be a vegetarian because he is a Buddhist.

The argument assumes that

- (a) most Buddhists are vegetarians
- (b) all Buddhists are vegetarians
- (c) only Buddhists are vegetarians
- (d) most vegetarians are Buddhists

Q150 A person travels from X to Y a speed of 40 kmph and returns by increasing his speed by 50%. What is his average speed for both the trips ?

- (a) 36 kmph
 - (b) 45 kmph
 - (c) 48 kmph
 - (d) 50 kmph
-